



1218: Jersey Water Millbrook Lab re-purpose feasibility

Prepared by: Elliott Design Partnership

## 1218: Jersey Water Millbrook Lab re-purpose feasibility

Prepared by: Elliott Design Partnership

## Nursery



Specification: High Quality Out of town office Building with Plenty of Parking

Gross area 125m<sup>2</sup> excluding storage area

Nett internal: 100m<sup>2</sup>.

Large high windows. Plenty of natural light

Subsidiary loft storage area

External area

Parking Spaces

## Option 1: Nursery

## Option 1: Nursery

### 3.3 Space – Indoors

3.3.1 Registered settings must meet the following minimum indoor space requirements:

- Children aged below 2 years 3.7 m<sup>2</sup> per child for internal play
- Children ages 2 to 3 years 2.8 m<sup>2</sup> per child for internal play
- Children ages 3 to 4 years 2.3 m<sup>2</sup> per child for internal play

3.4.1 A dedicated, safe, and enclosed outdoor space must be provided and be sufficient in size to allow all children to move freely and energetically.

3.4.2 There must be direct and continuous access from the indoor space into the outdoor space. If no direct access is available, children must be supported to independently gain access to the outdoor area safely.

3.4.3 Only fixed climbing equipment over 0.6m high should have a safety surface

3.4.4 Shade must be provided for outdoor areas.

3.4.5 Equipment and resources in the outdoor area must allow for challenge and development in all areas of learning.

3.1.8 There must be a separate area for staff breaks and personal storage, and adult toilet facilities.

3.1.9 There must be a separate administration/office space for the secure storage of documentation and staff/child records in line with the Data Protection (Jersey) Law, 2018.<sup>14</sup>

3.1.10 Appropriate IT/digital equipment should be available to enable compliance with the statutory requirements

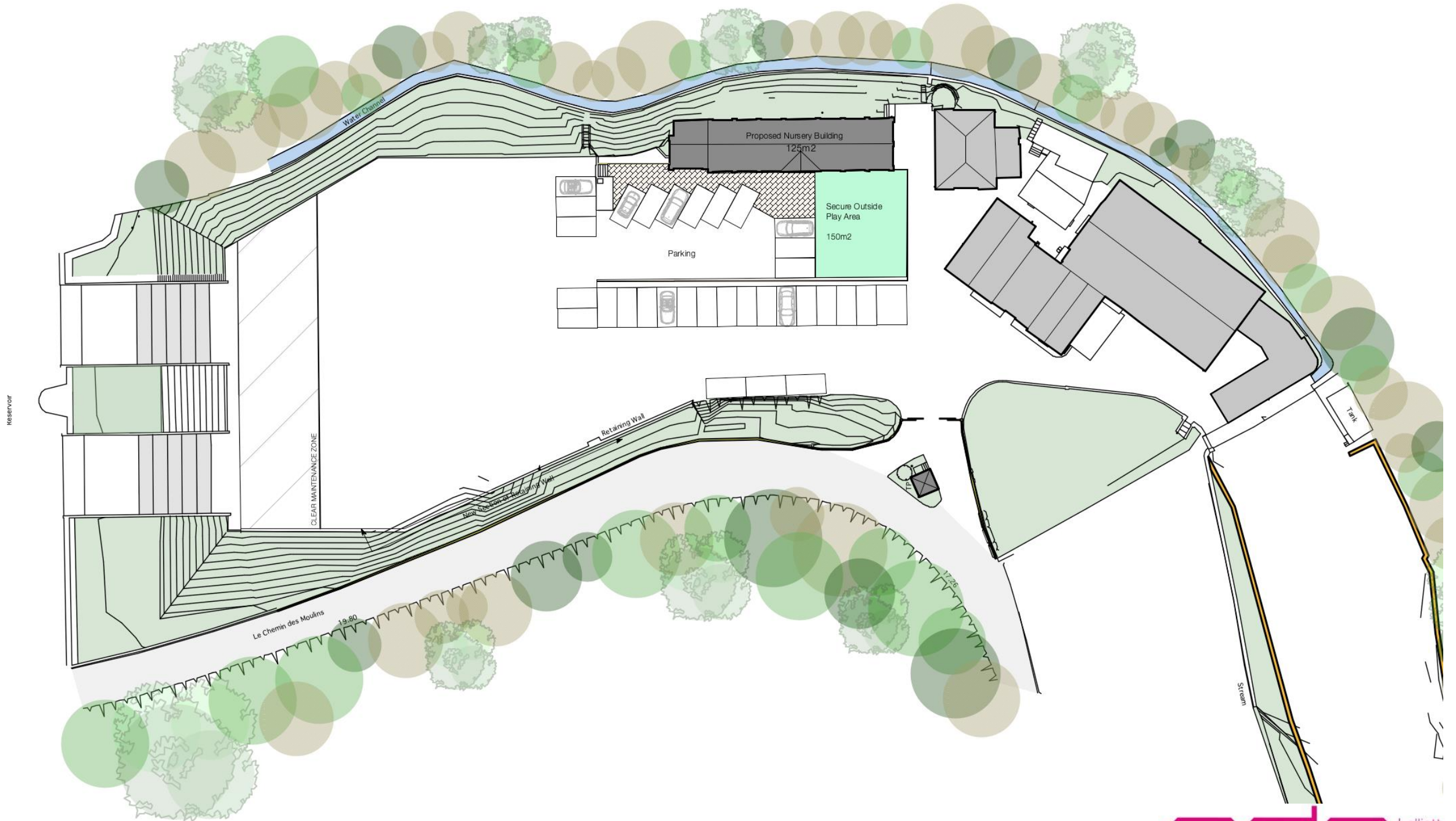
3.1.11 There must be a system for managing access to the premises and a record of visitors kept.

3.1.12 Areas for play must be well ventilated and maximise opportunity for natural light.

# 1218: Jersey Water Millbrook Lab re-purpose feasibility

Prepared by: Elliott Design Partnership

## Nursery

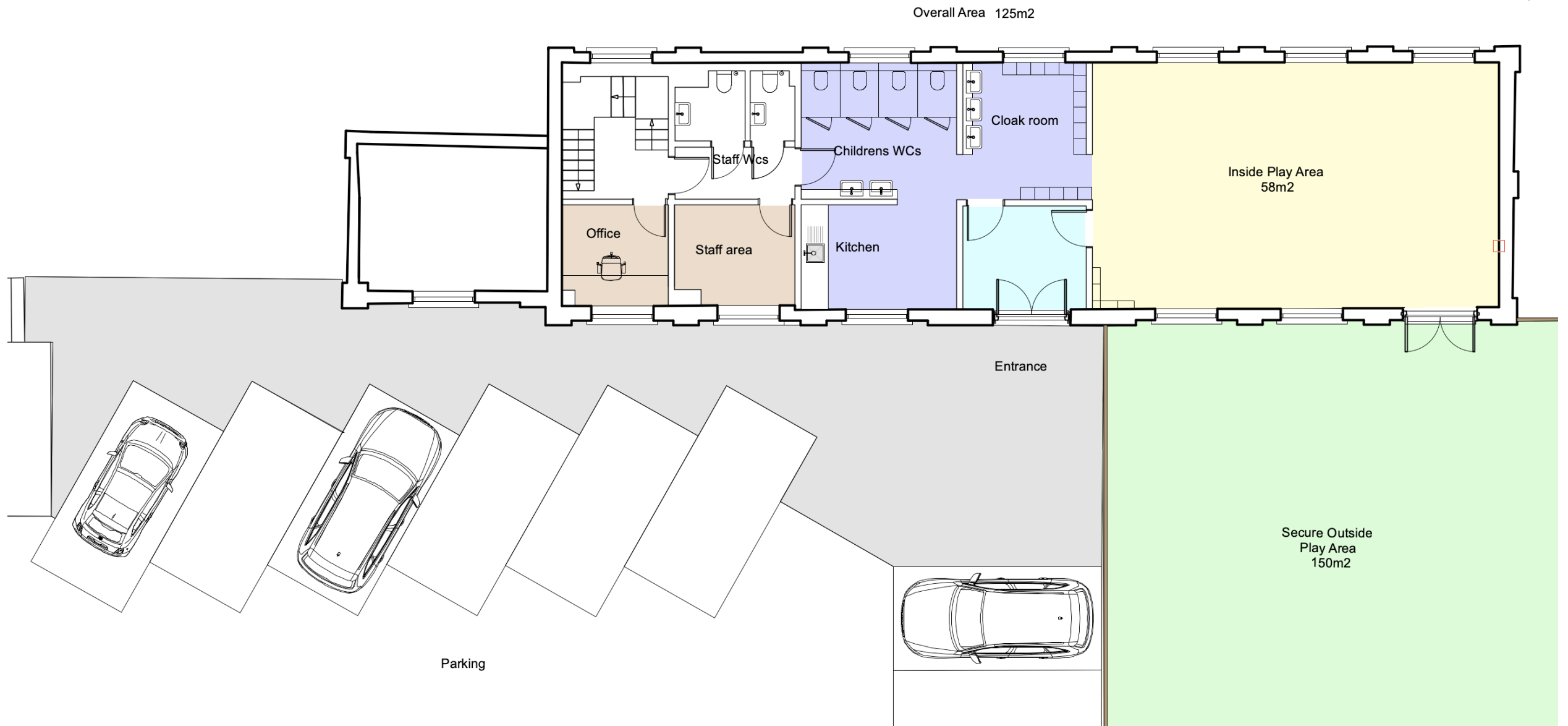


### Location Plan

# 1218: Jersey Water Millbrook Lab re-purpose feasibility

Prepared by: Elliott Design Partnership

## Nursery

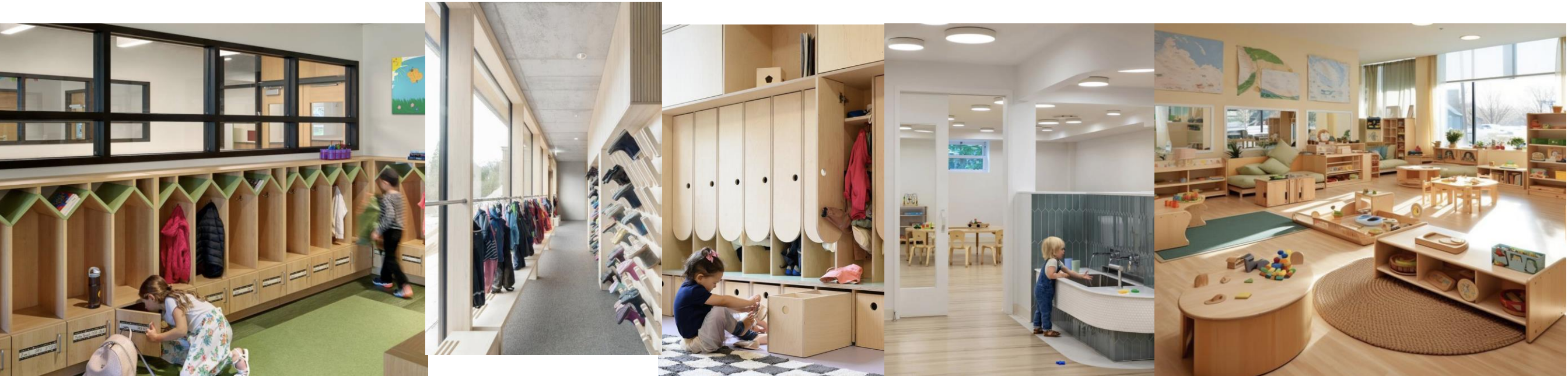


Concept Plan as Proposed

# 1218: Jersey Water Millbrook Lab re-purpose feasibility

Prepared by: Elliott Design Partnership

# Nursery



## Concept Images

# 1218: Jersey Water Millbrook Lab re-purpose feasibility

Prepared by: Elliott Design Partnership

# Nursery



## Concept Images